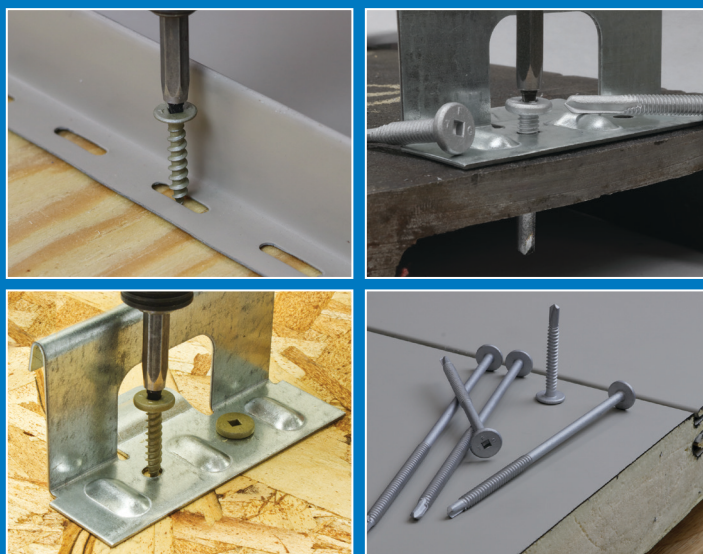


ONCEALOR[®]

LOW PROFILE SCREWS



*The Original
Line of Pancake
Head Screws!*



MD323.0622



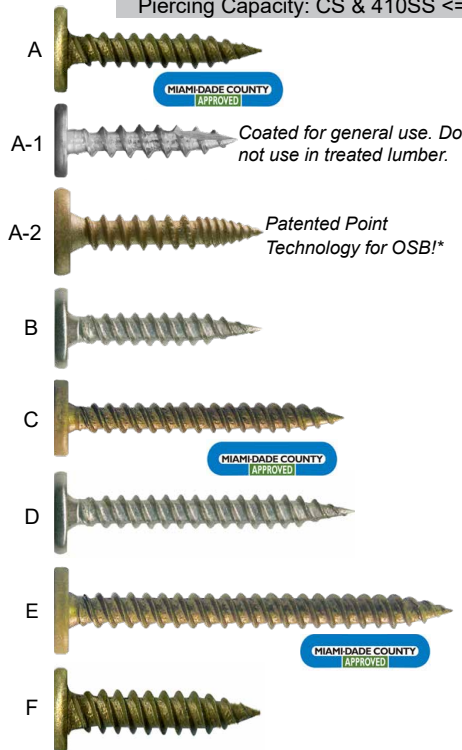
TRIANGLE FASTENER CORPORATION
www.trianglefastener.com | 800.486.1832
Fastening Systems and Solutions For Construction

WOOD OR THIN METAL

Piercing Capacity: CS & 410SS <=20 ga

#10, #12, & 1/4" PIERCING POINTS AND DRILL POINTS

CONCEALOR® low profile head fasteners are engineered to perform in a variety of applications. They are specified in many metal roofing systems to attached SSR clips to metal or wood. They are easy to install and provides optimal strength.

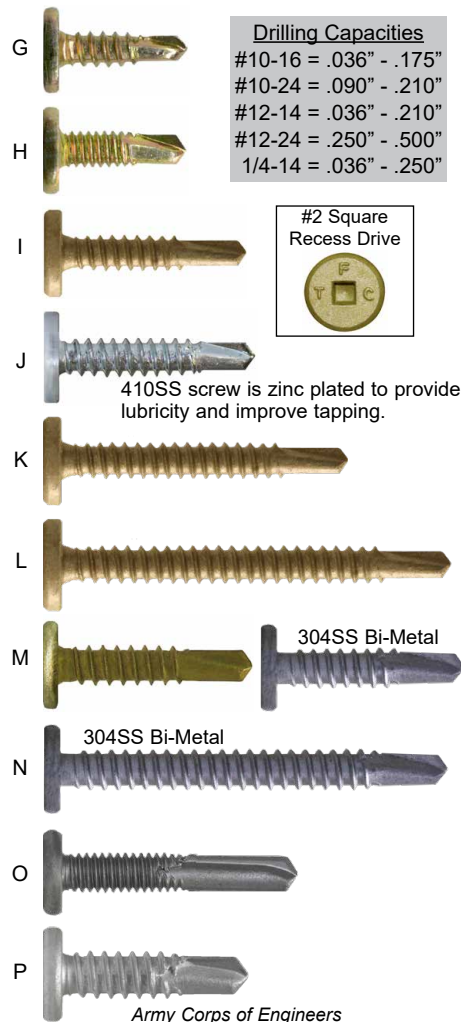


SIZES

MEETS FLORIDA BUILDING CODE 1506.6 & R904.5.2 (TRI-SEAL® & SS ONLY)

	Description	Load Bearing Length (Max)	Part Number	Box Quantity	WT Per Box
A	#10-13 X 1" GP Long-life TRI-SEAL® coated	1"	10100SPCGCSTS	5,000 pcs	36.0 lbs.
A-1	#10-9 X 1" Type 17 Coated for general use	1"	10100SPC17CSCZ	5,000 pcs	36.0 lbs.
A-2	#10-12 X 1" BURR BUSTER Long-life TRI-SEAL® coated	1"	10100SPCGBBCSTS	5,000 pcs	36.0 lbs.
B	#10-13 X 1" GP 302 Stainless Steel	1"	10100SPCGS3	5,000 pcs	39.0 lbs.
C	#10-13 X 1-1/2" GP Long-life TRI-SEAL® coated	1-1/2"	10150SPCGCSTS	3,000 pcs	31.0 lbs.
D	#10-13 X 1-1/2" GP 302 Stainless Steel	1-1/2"	10150SPCGS3	3,000 pcs	32 lbs.
E	#10-13 X 2" GP Long-life TRI-SEAL® coated	2"	10200SPCGCSTS	1,500 pcs	19.0 lbs.
F	#12-11 X 1" GP Long-life TRI-SEAL® coated	1"	12100SPCGCSTS	5,000 pcs	44.0 lbs.
G	#10-16 X 5/8" DP3 .0003" Zinc and Yellow	.125"	10062SPC3CS	5,000 pcs	27.0 lbs.
H	#10-24 X 5/8" DP3 .0003" Zinc and Yellow	.125"	10062SPC3CSYZ	5,000 pcs	27.0 lbs.
I	#10-16 X 1" DP3 Long-Life TRI-SEAL® coated	.500"	10100SPC3CSTS	5,000 pcs	37.0 lbs.
J	#10-16 X 1" DP3 410 Stainless Steel / ZP	.500"	10100SPC3S4	5,000 pcs	37.0 lbs.
K	#10-16 X 1-1/2" DP3 Long-Life TRI-SEAL® coated	1"	10150SPC3CSTS	3,000 pcs	32.0 lbs.
L	#10-16 x 2" DP3 Long-Life TRI-SEAL® coated	1.5"	10200SPC3CSTS	1,500 pcs	21.0 lbs.
M	#12-14 X 1" DP3 Long-Life TRI-SEAL® coated	.375"	12100SPC3CSTS	5,000 pcs	43.0 lbs.
	#12-14 X 1" DP3 304SS Bi-Metal	.375"	12100SPC3BM	5,000 pcs	43.0 lbs.
N	#12-14 X 2" DP3 304SS Bi-Metal	1.5"	12200SPC3BM	1,500 pcs	21.0 lbs.
O	#12-24 X 1-1/4" DP5 Long-Life TRI-SEAL® coated	.500"	12125SPC5CSTS	4,000 pcs	52.0 lbs.
	#12-24 X 1-1/2" DP5 Long-Life TRI-SEAL® coated	.625"	12150SPC5CSTS	4,000 pcs	43.8 lbs.
P	1/4-14 X 1" DP3 Long-Life TRI-SEAL® coated	.325"	14100SPC3CSTS	2,500 pcs	27.0 lbs.

METAL SUBSTRATES



Bagged 250 pcs. per bag

SPECIAL APPLICATIONS

Assemble CONCEALOR® with a bonded sealing washer that locks out weather!



We can color match to your exact requirements in three days or less!

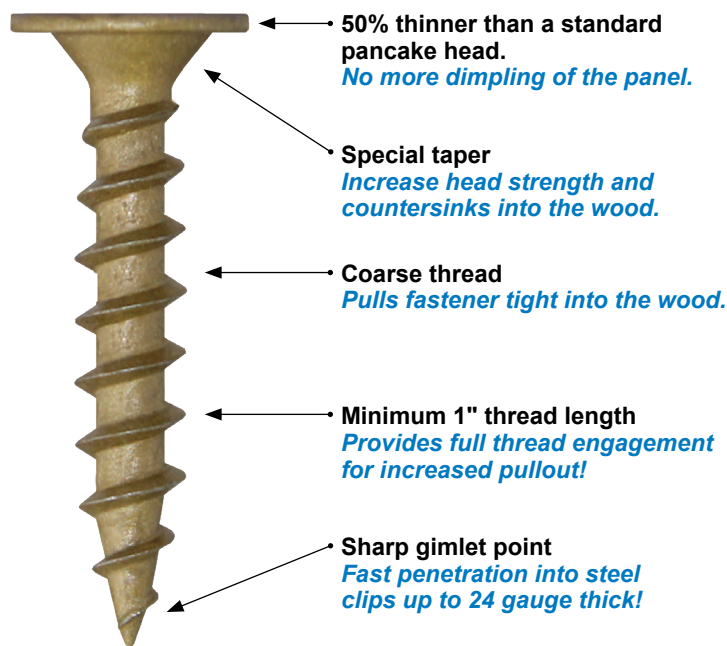


Installation: Do NOT use impact drivers. Use 2,500 RPM max variable speed screw drivers with torque control or depth sensing nosepiece.

***Pat. No.:** 11,105,362

All information is non-binding and without guarantee. Before using the products, all specifications and calculations must be checked by a suitably qualified person and local regulations must be observed. This document is subject to revision. We reserve the right to make technical changes. (0321-1)

Need it Ultra Low?



Available in lengths up to 2-1/8"!

Trust the original Ultra Low Profile Screw!

The CONCEALOR® ULP screws are engineered to attach standing seam roof clips to wood. They are the preferred screw for attaching clip-less nail hem metal roof panels, are easy to install, and provide optimal strength. ULP's are supplied with TRI-SEAL® 1,000-hours salt spray coating which can be used in treated and fire treated lumber.



Bagged 250 pcs. per bag for your convenience!

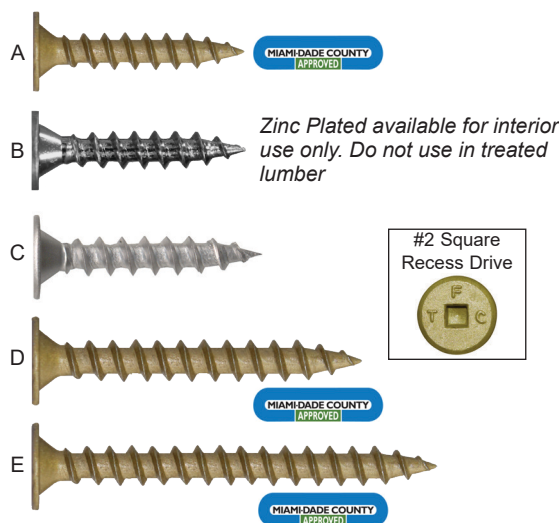
MEETS FLORIDA BUILDING CODE 1506.6 & R904.5.2(TRI-SEAL® & SS ONLY)

Sizes

Pierce up to 20 ga steel

	Description	Part Number	Box Quantity	WT Per Box	Price
A	#10-9 X 1-1/8" ULP (CS) Long-life TRI-SEAL™ coated	10112SPCUGCSTS	5,000	31.0 lbs	
B	#10-9 X 1-1/8" ULP (CS) Zinc Plated Interior Use Only	10112SPCUGCSZP	5,000	31.0 lbs	
C	#10-9 X 1-1/8" ULP (410 SS) Passivated	101125SPCUGS4	5,000	32.0 lbs.	
D	#10-9 X 1-5/8" ULP (CS) Long-life TRI-SEAL™ coated	1062SPCUGCSTS	3,000	34.0 lbs.	
E	#10-9 X 2-1/8" ULP(CS) Long-life TRI-SEAL™ coated	10212SPCUGCSTS	1,500	17.0 lbs.	

CS = Carbon Steel - C1018 / C1022
410 SS = 410 Stainless Steel



TECHNICAL INFORMATION

Description: #10-9 Gimlet Point self-tapping screw
Head Style: Ultra low pancake head with taper.
Drive System: #2 square recess
Head Thickness: .040"
Material: C1022 carbon steel
410 Stainless steel
(Copper Roofing Compatible)
Heat Treat: Case hardened to ANSI/ASME B18.6.4 specification
Finish
Carbon Steel: TRI-SEAL™ long-life coating (1,000hrs. salt spray)
Stainless Steel: Passivated (48hrs. salt spray)

Thread Detail

Major Diameter: .195"
Minor Diameter: .125"
Stress Area: .01267 in²

Pullout - Average Ultimate in Pounds

Fastener Dia. & Point	Wood Type						
	1/2" Plywood	5/8" Plywood	3/4" Plywood	7/16" OSB	19/32" OSB	23/32" OSB	2 x 4 SYP
#10-9 GP	383	395	574	136	356	514	813

Farabaugh Engineering Test: Project No. T279-10

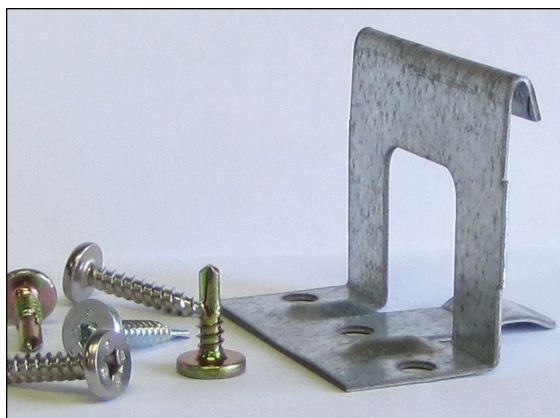
Rev 040711

Fastener Strength

Torsional	60 lb-in
Tensile	1,520 lbs. min.
Shear	1,150 lbs. min.

Installation: Do not use impact drivers!
Use 2,500 RPM max variable speed screw drivers
with torque control or depth sensing nosepiece.

All information is non-binding and without guarantee. Before using the products, all specifications and calculations must be checked by a suitably qualified person and local regulations must be observed. This document is subject to revision. We reserve the right to make technical changes. (0321-1)



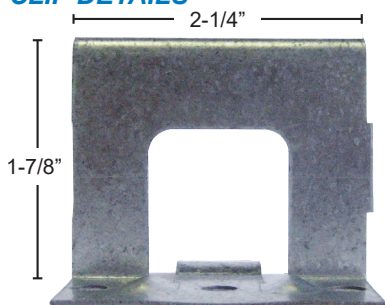
Are you tired of having to calculate the uplift loads of SSR clips used in your metal roof assembly?

We have a solution...the SSR CLIP KIT!

We provide a 1-7/8" tall fixed clip that is UL classified and has been independently tested to certify its ultimate uplift load capacity.

Clips are supplied with approved fasteners that meet your specific application requirement.

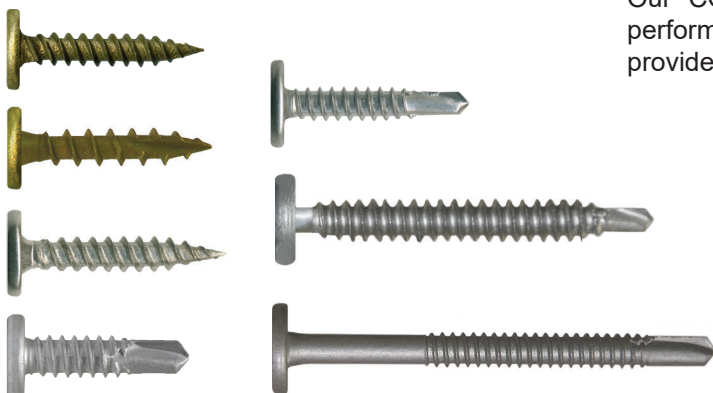
CLIP DETAILS



Our SSR fixed clips are engineered to high standards. They are produced to tight tolerances so they install easily and perform with many different panel brands. Specifically designed for a Snap-Lock style SSR panel.

- Clip is high strength 18ga. galvanized steel for superior performance.
- 1-7/8" tall providing additional clearance between the panel and the decking for better air flow and energy efficiency.
- UL classified.
- Compatible for PAK-CLAD, Snap-Clad, and Fabral thin seam panels.

FASTENER DETAILS



Our CONCEALOR® low profile head screws are engineered to perform in a variety of applications. They are easy to install and provide exceptional pullout.

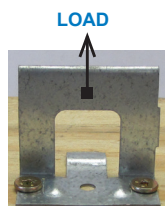
- High performance CONCEALOR® Low Profile Clip Screws for a variety of substrates.
- Carbon steel with TRI-SEAL™ long-life coating or stainless steel.
- Square recess drive for optimal installation stability.
- #10, #12, #14 diameters in lengths up to 9" long!

TECHNICAL DATA

These loads are from tests conducted at an independent laboratory. They are values for the clip assembly; where the clip is attached to the substrate using two (2) screws.

A load was applied to the vertical leg of the clip until failure occurred.

Loads are ultimate for each clip and screw assembly.



Upload Test Results - Clip and Screw Assembly - Average Ultimate

Screw Type	PLYWOOD			OSB			2X PINE	METAL (50KSI minimum)				
	1/2"	5/8"	3/4"	7/16"	19/32"	23/32"	1" EMBD	'22 ga	'20 ga	18 ga	16 ga	14 ga
#10-9 GP	486	598	834	217	491	538	978					
#12-14 GP	436	665	786	182	491	678	800					
#10 DP3										661	*1194	*1334
#12 DP3										706	*1088	*1296
#14-13 DP1	520	725	*1173	234	552	611	*1175	736	839			
1/4 DP3										683	*1047	*1325

* Denotes clip failure | Tore Clip

Clip dimensions: 1-1/8" x 3 1/2" x 1 7/8" | 18 ga. Galvanized Steel | 1/2" Screw Offset

1. Denotes test set-up using two inches of foam insulation on top of deck. A 16-ga. bearing plate was between the clip and the insulation.

NOTE: To produce values listed in this chart, clip must be installed using CONCEALOR® pancake head screws only.

Load values are a result of tests conducted at Farabaugh Engineering Services, McKeesport PA. Report # XXXXX. Certified test report available.

CONTACT TFC FOR SPECIFIC LENGTH

DISCLAIMER: ALL DATA AND SPECIFICATIONS ARE BASED ON LABORATORY TESTS. APPROPRIATE SAFETY FACTORS SHOULD BE USED BY THE USER OR SPECIFIER. DETERMINING THE PROPER FASTENER IS THE RESPONSIBILITY OF THE USER OR SPECIFIER. BECAUSE APPLICATION CONDITIONS VARY, WE ASSUME NO LIABILITY FOR THE USE OF THIS INFORMATION.

Report #JS031711

Concealor is a registered trademark of Triangle Fastener Corporation. Copyright 2011

TFC VALUE PROPOSITION

Large Selection

Lengths to meet your application needs.

Best Quality

Assures low in-place cost.

Fast Delivery / Need-it-Now!

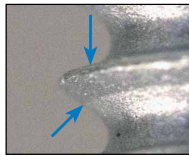
Reduces your inventory costs.

SS Denotes available sizes in stainless steel

Here is why we use a special thread...

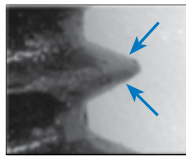
We use a buttress thread that provides exceptional clamping loads and is specified in many metal roofing systems to attach SSR clips over rigid insulation into metal deck.

CONCEALOR® with Buttress Thread



"Flat" thread keeps the joint tight

Ordinary Thread Form



A "Tapered" thread tends to cause the joint to loosen

#2 Square Recess Drive



- Attach to metal, wood, and concrete -

CARBON STEEL

- TRI-SEAL® coated provides over 10-times more corrosion resistance than black epoxy coated screws
- Drill and tap up to *16ga steel
- Can be used in concrete applications.

* The hardness of the steel can affect the drill and tap performance and may require predrilling. For concrete, predrill using a 3/16" masonry bit.

304 STAINLESS STEEL

- 304 Stainless Steel Bi-Metal provides superior corrosion resistance
- Drill and tap up to *18ga steel
- TRI-SEAL® coated provides lubricity that minimizes thread roll-over

SIZES

* Denotes 4-1/2" Thread Length

Description	Load Bearing Length	Part Number	Carton Quantity	Wt Per Carton	PRICE
#14-13 x 3/4" DP1	.125"	14075SPC1CSTS	3,000 pcs	21 lbs	
#14-13 x 1-1/2" DP1	.750"	CS: 14150SPC1CSTS 304SS: 14150SPC1BM	2,500 pcs	34 lbs	
#14-13 x 2" DP1	1.250"	CS: 14200SPC1CSTS 304SS: 14200SPC1BM	1,000 pcs	18 lbs	
#14-13 x 3" DP1	.125" - 2.250"	CS: 14300SPC1CSTS 304SS: 14300SPC1BM	1,000 pcs	24 lbs	
#14-13 x 4" DP1	.125" - 3.250"	14400SPC1CSTS	500 pcs	16 lbs	
#14-13 x 4-1/2" DP1	.625" - 3.375"	14450SPC1CSTS	500 pcs	17 lbs	
#14-13 x 5" DP1*	1.250" - 4.250"	14500SPC1CSTS	500 pcs	19 lbs	
#14-13 x 6" DP1*	2.125" - 5.250"	14600SPC1CSTS	500 pcs	23 lbs	
#14-13 x 7" DP1*	3.875" - 6.250"	CS: 14700SPC1CSTS 304SS: 14700SPC1BM	500 pcs	28 lbs	
#14-13 x 8" DP1*	4.875" - 7.250"	14800SPC1CSTS	250 pcs	17 lbs	
#14-13 x 9" DP1*	5.875" - 8.250"	14900SPC1CSTS	250 pcs	19 lbs	

Installation: DO NOT USE IMPACT DRIVERS!

Use 2,500 RPM max variable speed screw drivers with torque control or depth sensing nosepiece.

All information is non-binding and without guarantee. Before using the products, all specifications and calculations must be checked by a suitably qualified person and local regulations must be observed. This document is subject to revision. We reserve the right to make technical changes. (0321-1)

MEETS FLORIDA BUILDING
CODE 1506.6 & R904.5.2
(TRI-SEAL® & SS ONLY)

Technical Info

Refer to page MD28 for complete technical data.

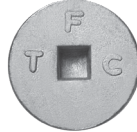


1/4-14 DP3 - DRILL AND TAP UP TO 1/4" THICK STEEL

#14 DP3 CONCEALOR® pancake head screws are designed for heavy gauge applications and can drill and tap up to 1/4" steel. The 1/4-14 thread produces greater strength and resists bending compared to smaller diameter screws. Originally designed for IMP!

These screws are coated with TRI-SEAL™ long-life coating that exceeds ASTM B633 specifications providing 1,000-hours salt spray performance, and FM4470 per ASTM G87 Sulfur Dioxide Test.

SPECIAL HEAD DESIGN



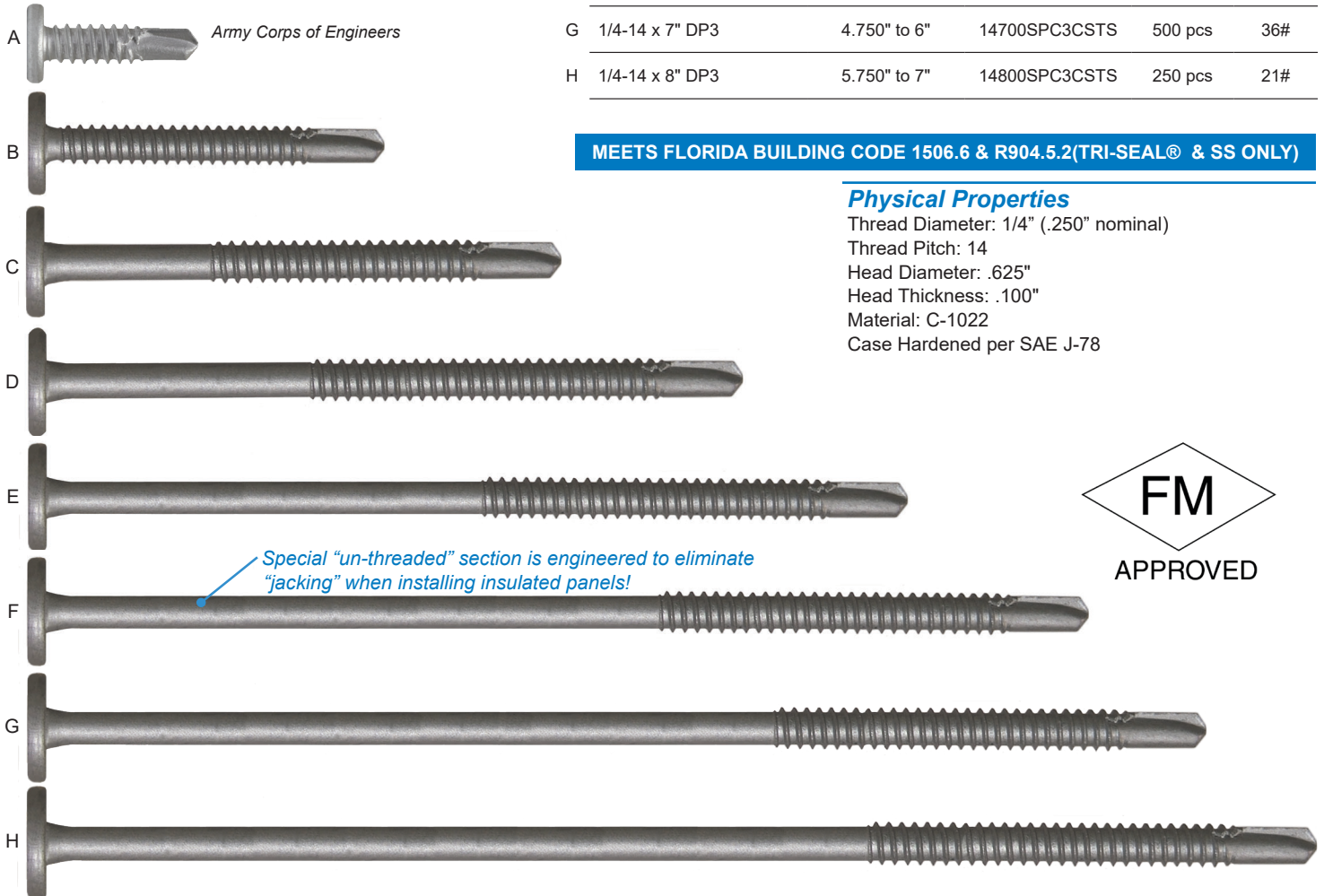
- 5/8" diameter head increases pullover strength and minimizes dimpling.
- #3 square recess drive provides stability during installation.

	Description	Load Bearing Length (MAX)	Part Number	Carton Quantity	Wt Per Carton
A	1/4-14 X 1" DP3	.325"	14100SPC3CS	2,500 pcs	27#
B	1/4-14 x 2" DP3	1.000"	14200SPC3CSTS	1,000 pcs	23#
C	1/4-14 x 3" DP3	1.375" to 2"	14300SPC3CSTS	1,000 pcs	33#
D	1/4-14 x 4" DP3	1.625" to 3"	14400SPC3CSTS	500 pcs	21#
E	1/4-14 x 5" DP3	2.750" to 4"	14500SPC3CSTS	500 pcs	25#
F	1/4-14 x 6" DP3	3.750" to 5"	14600SPC3CSTS	500 pcs	30#
G	1/4-14 x 7" DP3	4.750" to 6"	14700SPC3CSTS	500 pcs	36#
H	1/4-14 x 8" DP3	5.750" to 7"	14800SPC3CSTS	250 pcs	21#

MEETS FLORIDA BUILDING CODE 1506.6 & R904.5.2(TRI-SEAL® & SS ONLY)

Physical Properties

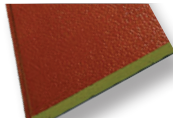
Thread Diameter: 1/4" (.250" nominal)
 Thread Pitch: 14
 Head Diameter: .625"
 Head Thickness: .100"
 Material: C-1022
 Case Hardened per SAE J-78



SPECIAL APPLICATIONS

Use to attach a variety of material to steel up to 1/4" thick!

ARCHITECTURAL
INSULATED PANELS



STRUCTURAL
INSULATED PANELS



NAIL
BASE



METAL ROOF
CLIPS



TOOLING: Install using a 2,000 RPM screw-gun with torque control. (DeWalt DW267)
 Do not use impact tools.

All information is non-binding and without guarantee. Before using the products, all specifications and calculations must be checked by a suitably qualified person and local regulations must be observed. This document is subject to revision. We reserve the right to make technical changes. (0321-1)

Pullout In Steel - Average Ultimate (lbs) (Carbon and Stainless Steel Screws)

Fastener Information (Drill Points)		PULLOUT ULTIMATE LOAD IN POUNDS Calculated Values In Accordance to AISI S100 Section E4													
Screw Size	Nom Dia. (in.)	Grade 50 per ASTM A1011 60Ksi Min. Steel					Grade 50 per ASTM A792/A653/A572/A529 65Ksi Min. Steel								
		26 Ga. (.018")	25 Ga. (.021")	24 Ga. (.024")	22 Ga. (.030")	20 Ga. (.036")	18 Ga. (.048")	16 Ga. (.060")	14 Ga. (.075")	12 Ga. (.105")	1/8" (.125")	10 ga (.135")	1/4" (.250")	3/8" (.375")	1/2" (.500")
#10-16	.190"	174	203	233	291	349	504	630	787	1102	1312				
#10-24	.190"								787	1102	1312				
#12-14	.216"	198	231	264	330	397	573	716	895	1253	1492	1611			
#12-24	.216"									1492	1611	2984	*4475	*5967	
#14-13	.235"	216	252	288	360	431	623	779							
1/4-14	.250"							829	1036	1450	1727	1865	3453	*5180	*6906

Tested values are available upon request.
Revised: 0220AR

NOTE: * exceeds tensile strength of the screw.



PULLOVER

Screw	Tee Clip 24 ga. (Ave. Ultimate)	Zee Clip 24 ga. (Ave. Ultimate)
#10	415 lbs.	510 lbs.
#12	430 lbs.	692 lbs.
#14 DP1	407 lbs.	677 lbs.

* Berridge Clips
REV.JES082712

APPROVALS

Factory Mutual: 1/4-14 DP3 CONCEALOR.
FM Approval Standard 4481 Class 1 - Wall Fastener
Miami Date: #10 GP CONCEALOR

MEETS FLORIDA BUILDING CODE 1506.6
& R904.5.2 (TRI-SEAL® & SS ONLY)

Pullout In Wood - Average Ultimate (lbs)

Screw Size and Point type	PLYWOOD - CDX			OSB			SYP
	15/32" (1/2" Nom)	19/32" (5/8" Nom)	23/32" (3/4" Nom)	7/16"	19/32"	23/32"	
#10-9 GP	383	395	574	136	256	514	813
#10-12 BB *		450	706	258	381		648*
#10-13 GP	375	505	654	166	357	442	737
#12-11 GP	418	455	624	*164	379	573	918
#14-13 DP1	434	475	626	153	327	457	991

Farabaugh Engineering Test: Project No. T279-10 & * T282-15 REV JS042220



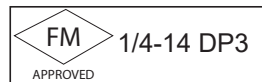
Decking fasteners tested with full thread embedment. 2 x 4 SYP with 1" embedment in side

* Test Report # T279-17 & T299-17 | Farabaugh Engineering.
NOTE: * 1" embedment into face of 2x. Deeper embedment will increase pullout.

Pullout In Concrete - Average Ultimate (lbs)

Fastener Dia. & Point	3,000 psi Concrete
	1" Embedment
#14-13 DP1	740 lbs.

TF Test: 10.15.09
Drill Bit Size: 3/16" Masonry Bit. Depth of hole > 2".
(Screw should not exceed 1" embedment.) REV JS1218



PERFORMANCE SPECIFICATIONS

Fastener Diameter & Material	Minimum Ultimate			
	Thread Diameter	Tensile (lbs.)	Shear (lbs.)	Torsional (lbs-in)
#10-9 / Carbon	0.200"	1,520	1,150	60
#10-9 / 410SS	0.200"	2,500	1,625	85
#10-13 / Carbon	0.195"	1,725	1,125	60
#10-13 / 302SS	0.195"	1,040	701	45
#10-16 / Carbon	0.186"	2,100	1,400	61
#10-16 / 410SS	0.186"	3,200	2,130	92
#12-11 / Carbon	0.220"	2,500	2,000	95
#12-14 / Carbon	0.212"	2,778	2,000	100
#12-14 / 304SS	0.212"	2,630	1,978	85
#12-24 / Carbon	0.213"	3,450	2,420	110
1/4-14 / Carbon	0.243"	3,850	2,600	150
#14-13 / Carbon	0.235"	2,600	1,500	95
#14-13 / 304SS	0.235"	2,000	1,200	77

FASTENER PROPERTIES

REV JS0120

Thread Type and Point	Thread Major Dia.	Material	Head Dia.	Head Thickness	Drive	Finish
#10-16 DP2	.180"	C1022	.450"	.095"	#2 Sq	.0003" Zinc & Yellow
#10-24 DP3	.185"	C1022	.450"	.095"	#2 Sq	.0003" Zinc & Yellow
#10-12 BB	.185"	C1022	.450"	.095"	#2 Sq	TRI-SEAL® Coated
#10-13 GP	.190"	C1022 302 SS	.450"	.095"	#2 Sq	CS: TRI-SEAL® Coated SS: Passivated
#10-16 DP3	.180"	C1022 410 SS	.450"	.095"	#2 Sq	CS: TRI-SEAL® Coated SS: .0002" Zinc & Clear for lubricity
#10-9 GP (ULP)	.200"	C1022 410 SS	.450"	.040"	#2 Sq	TRI-SEAL® Coated Passivated
#12-11 GP	.220"	C1022 302 SS	.450"	.095"	#2 Sq	CS: TRI-SEAL® Coated SS: Passivated
#12-14 DP3 (SD300)	.210"	C1022 304 SS	.450"	.080"	#2 Sq	.0003" Zinc & Yellow TRI-SEAL Coated
#12-24 DP5	.210"	C1022	.450"	.095"	#3 Sq	.0003" Zinc & Yellow TRI-SEAL® Coated
#14-13 DP1	.235"	C1022 304SS	.500"	.095"	#2 Sq	CS: TRI-SEAL® Coated SS: Passivated & Coated for lubricity
1/4-14 DP3	.245"	C1022	.500" (1") .625" (>2")	.095"	#2 Sq #3 Sq	TRI-SEAL® Coated

SALT SPRAY

The chart below provides general corrosion information about various plating and coatings. Contact TFC for detailed information.

SALT SPRAY Per ASTM F1941 & B117 (0% red rust) Rev. 120313

Coating	Salt Spray
.0002" min. (6um) zinc plating with clear chromate	24hrs
.0002" Zinc Plating / Coated	60hrs
.0005" min. (12 um) zinc plating with clear chromate	72hrs
.0003" min. (8 um) zinc plating with yellow dichromate	120hrs
.0002" Zinc Plated 410 Stainless Steel	450hrs
Passivated Coated 410 Stainless Steel	500hrs
TRI-SEAL™ Long-life coating	1,000hrs
Passivated 302 & 304 SS	>2,000hrs

NOTE: 304SS and 410SS screws are zinc plated or TRI-SEAL® coated to provide lubricity and improve tapping performance.

TOOLING | Do not use impact tools!

Screw-gun RPM

Carbon Steel & 410SS Screws: 2,500 RPM Max.
DP5, 1/4" & 5/16" DP3: 2,000 RPM Max.
302 & 304 Stainless Steel Tapping Screws: 1,000 RPM Max.
For optimal performance, use screw-guns with torque control feature.

DO NOT OVER-TORQUE FASTENERS.

Fastening Tips

- A minimum of 3 factors of safety should be used for most self-drilling or self-tapping fasteners in metal | 5-6 for wood. Consult a design professional for appropriate values.
- Install fastener perpendicular to the work surface and tighten to no more than approximately 70% of the torsional strength.
- Allow at least three full threads to extend beyond the material. For wood applications, allow 1" minimum embedment or full thread embedment in plywood and OSB for optimal pullout resistance.

FASTENER MATERIAL SELECTION BASED ON THE GALVANIC SERIES OF METALS

BASE METAL	FASTENER MATERIAL			
	STEEL Zinc Plated	STAINLESS STEEL Type 410	STAINLESS STEEL Type 302, 304, 316	ALUMINUM
Zinc Galvanized ZN/Al Coated Steel	A	C	C	B
Aluminum	A	Not Recommended	B	A
Steel / Cast Iron	A,D	C	B	A
Brass, Copper, Bronze	A,D,E	A	B	A,E
Stainless Steel 300 Series	A,D,E	A	A	A,E

Key

- The corrosion of the base metal is not increased by the fastener.
- The corrosion of the base metal is slightly increased by the fastener.
- The corrosion of the base metal may be considerably increased by the fastener material.
- The plating on the fastener is rapidly consumed.
- The corrosion of the fastener is increased by the base metal.

*NOTE: Marine environments can cause galvanic corrosion. Consult panel manufacture for compatible fasteners to minimize galvanic corrosion.

All information is non-binding and without guarantee. Before using the products, all specifications and calculations must be checked by a suitably qualified person and local regulations must be observed. This document is subject to revision. We reserve the right to make technical changes. (0321-1)



NEED-IT-NOW?

We can help!

- Fasteners, Tools, Sealants and Contractor Supplies
- Delivery and Stocking Programs
- Technical Support
- Product Development
- Job-site Assistance



FASTENING SYSTEMS AND SOLUTIONS FOR COMMERCIAL CONSTRUCTION

MARKETS



Application Focused

- Flat Roofing
- Metal Building and Roofing
- Post Frame
- Sheathing | Curtain Wall
- Drywall | Interior
- HVAC / Electrical / Mechanical

24 LOCATIONS

How Can We Help You? Contact us Toll Free at 800.486.1832

Alabama - Birmingham
3800 1st Ave. North
Birmingham, AL 35222
P: 205.595.3444 | F: 205.595.7544

Florida - Orlando
114 Atlantic Annex Pt.
Maitland, FL 32751
P: 407.660.0167 | F: 407.660.1256

North Carolina - Charlotte
3317 Pelton Street
Charlotte, NC 28217
P: 704.586.0400 | F: 704.586.0300

Tennessee - Madison
213 Nesbitt Lane
Madison, TN 37115
P: 615.865.0007 | F: 615.868.7257

Alabama - Mobile
764 Lakeside Drive Suite A
Mobile, AL 36693
P: 251.665.5000 | F: 251.665.5001

Florida - Tampa
10111 Woodberry Road
Tampa, FL 33619
P: 813.689.6877 | F: 813.689.6717

North Carolina - Raleigh
79 Rupert Rd.
Raleigh, NC 27603
P: 919.733.1845 | F: 919.856.4910

Texas - Dallas
2801 West Airport Freeway
Irving, TX 75062
P: 972.659.9400 | F: 972.659.9403

Alabama - Montgomery
508 Hackel Drive
Montgomery, AL 36117
P: 334.270.8800 | F: 334.270.0331

Georgia - Atlanta
5800 Oakbrook Parkway, Suite A
Norcross, GA 30093
P: 770.417.1515 | F: 770.409.1451

Ohio - Cincinnati
1021 W. 8th Street
Cincinnati, OH 45203
P: 513.242.5802 | F: 513.242.8209

Texas - Houston
5210 Britton Moore Rd.
Houston, TX 77041
P: 713.466.7758 | F: 713.466.8390

California - San Jose
1425 Koll Circle
San Jose, CA 95112
P: 408-982-0581

Indiana - Indianapolis
7768 Zionsville Rd #400
Indianapolis, IN 46268
P: 317.872.3944 | F: 317.879.2181

Ohio - Cleveland
4661 Hinckley Ind. Pkwy.
Cleveland, OH 44109
P: 216.351.9933 | F: 216.351.5008

Virginia - Richmond
6529 Dickens Place
Richmond, VA 23230
P: 804.282.2360 | F: 804.282.4069

Delaware - New Castle
243-C Quigley Blvd.
New Castle, DE 19720
P: 302.322.0600 | F: 302.322.5102

Maryland - Baltimore
6550 Moravia Park Dr.
Baltimore, MD 21237
P: 410.485.8665 | F: 410.485.4560

Ohio - Columbus
1244 West Goodale Blvd.
Columbus, OH 43212
P: 614.487.8800 | F: 614.487.1634

Washington - Seattle
8459 South 208th Street
Kent, WA 98031
P: 206.575.0144 | F: 206.575.1118

Florida - Ft Lauderdale
5600 NW 12th Ave Suite 303
Ft. Lauderdale, FL 33309
P: 954.771.5232 | F: 954.771.5441

Michigan - Detroit Sales
Mark Enderle
Sales | Michigan / NW Ohio
C: 734.674.2466 | F: 216.351.5008

Pennsylvania - Pittsburgh
2001 Preble Ave.
Pittsburgh, PA 15233
P: 412.321.5000 | F: 412.321.7838

Florida - Jacksonville
6800 Suemac Place, Suite 2
Jacksonville, FL 32254
P: 904.695.0404 | F: 904.695.0062

Mississippi - Jackson
102 Diane Dr.
Richland, MS 39218
P: 601.664.3449 | F: 601.664.7185

Pennsylvania - Pittsburgh (Corp.)
1925 Preble Ave.
Pittsburgh, PA 15233
P: 412.321.5021 | F: 412.321.7838