



### Salt Spray Test Results

1,000hrs Per ASTM B117 - No Red Rust

Applications: Exceeds salt spray requirement specified in ASTM B633, B659, & F1941 (zinc plating).

Compatible for use in treated lumber

## TRI-SEAL® M1 1,000hrs Salt Spray Plating

**TRI-SEAL® M1** is a high performance long-life mechanical plating developed to minimize corrosion when used in exterior building applications. It consists of .0006" thick zinc-tin that exceeds at least 1,000 hours salt spray with no signs of red rust.

The distinguishing feature of **TRI-SEAL® M1** is the proprietary mechanical process that applies the zinc-tin material on the surface of the screw in a condensed uniform manor. This produces corrosion protection that far exceeds traditional hot dipped galvanized finish.

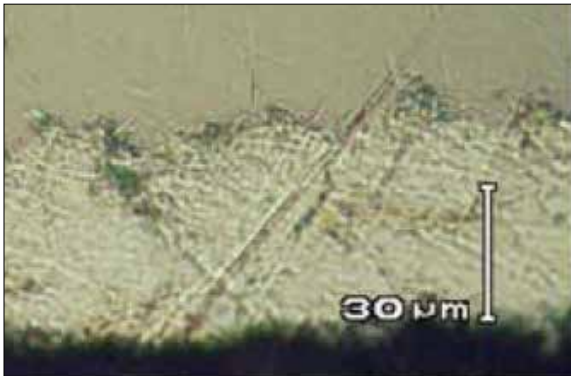
- Excellent corrosion resistance against gas, weather, and other kinds of corrosion factors, including salt water.
- Compatible for use in Treated and Fire Treated Lumber.
- No hydrogen embrittlement. RoHs compliant.
- Compatible with HDG, Galvalume and aluminum applications.
- UV Resistant

### SEM IMAGING

SEM (Scanning Electron Microscopy) is a test process that scans a sample with an electron beam to produce a magnified image for analysis. Known as SEM analysis and SEM microscopy, and is used in microanalysis and failure analysis of solid inorganic materials.

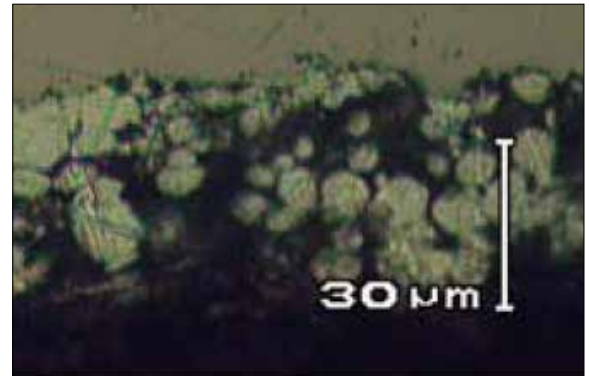
#### TRI-SEAL M1 Cross Section

Notice how dense TRI-SEAL M1 is on the base metal. This uniform finish provides superior corrosion protection.



#### Traditional Mechanical Plating Cross Section

Ordinary mechanical zinc plating can produce a very porous finish which can cause the base metal to corrode quickly.



### MATERIAL PROPERTIES

Finish: .0006" Mechanical Zinc-Tin with Sealer

#### Corrosion Testing

Salt Spray: 1,000-hrs No red rust

Per ASTM B117

Exceeds salt spray requirement specified in ASTM B633, B659, & F1941 (zinc plating).

**TRI-SEAL® M1 is our standard finish on PANEL-TITE® BURR BUSTER® carbon steel screws including our ZAC® zinc head and SSC stainless steel cap head**



**We conduct corrosion tests on all lots of our TFC SPECIFIC Products to assure performance**

Contact TFC for additional details on TRI-SEAL® M1.

Disclaimer: All information is non-binding and without guarantee. Before using the products, all specifications and calculations must be checked by a suitably qualified person and local regulations must be observed. This document is subject to revision. We reserve the right to make technical changes. (0321-1)