



Use in metal or wood!

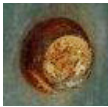
Designed for fast penetration, produces less chips, and provides exceptional corrosion protection

Our BURR-BUSTER® Technology screws were developed for exterior applications or where corrosion is a concern.

The proprietary dual thread was designed to penetrate steel faster with less chips than ordinary self-piercing screws.

The screws are provided with TRI-SEAL™ 1,000 hour salt spray coating for superior corrosion protection.

### PROBLEM



Do you have rusty screws?

Do you think you can use standard zinc plated screws in any application? Think again...they are not designed for exterior applications and rust quickly.

### SOLUTION



BURR-BUSTER® Screws are provided with our TRI-SEAL™ 1,000 hour salt spray coating, which is 40 times more corrosion resistant than zinc plated screws.

### SIZES



Description	Piercing Thickness	Part Number	Box Quantity	Wgt. Per Box
#10-16 x 3/4" w/ BURR-BUSTER® Point   5/16" HWH	2 x 20 ga. max (.072")	10075HWPBCTS5	4,000	25.3 lbs
#10-16 x 3/4" w/ BURR-BUSTER® Point   Mod Truss w #2 Sq. Recess	2 x 20 ga. max (.072")	10075MTBPCSTS5	4,000	25.3 lbs.

#### Applications

Trim • Gutter Straps • Steel Framing • HVAC Signs • Flashing

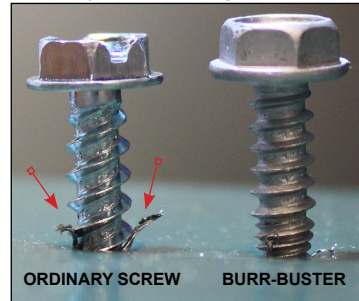
Supplied in convenient 250 piece bags



### PROBLEM

Ordinary self-piercing screws produce burrs during installation that can

damage surface and corrode quickly!



ORDINARY SCREW

BURR-BUSTER

### SOLUTION

BURR-BUSTER® Technology produces less burrs compared to ordinary self-piercing screws.

### TECHNICAL INFORMATION

Fastener Diameter	Nominal Screw Diameter	Major Diameter (inch)		Minor Diameter (inch)		Area Of Minor Dia. (sq in.)	Torsional (Lb.-In.)	Tensile (Pounds)	Shear (Pounds)
		Max	Min	Max	Min				
#10-16	0.190	0.189	0.183	0.141	0.135	0.0143	61	2,100	1,400

Description: #10-16 Gimlet Point Self Piercing Screw with BURR-BUSTER®

Head Style: 5/16" HWH | Modified Truss with #2 Square Recess

Material: C1022 carbon steel

Heat Treat: Case hardened to ANSI/ASME B18.6.4 specification

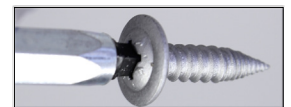
Finish: TRI-SEAL™ long-life coating (1,000hrs. salt spray)

#### Pullout

#### Avg. Ultimate in Pounds

24-ga (.024")	252 lbs.
22-ga (.030")	315 lbs.
20-ga (.036")	378 lbs.
18-ga (.048")	504 lbs.

#2 Square Recess for positive drive stability



Calculated Values In Accordance to  
AISI S100 | Section E4  
Grade 50 Steel per ASTM A792/A1011/  
A653/A572/A529

DISCLAIMER: ALL TESTS RESULTS AND SPECIFICATIONS ARE A RESULT OF LABORATORY TESTS. APPROPRIATE SAFETY FACTORS SHOULD BE USED BY THE USER OR SPECIFIER. DETERMINING THE PROPER FASTENER IS THE RESPONSIBILITY OF THE USER OR SPECIFIER. SINCE APPLICATION CONDITIONS VARY AND ARE UNCONTROLLABLE BY TFC, WE ASSUME NO LIABILITY FOR THE USE OF THIS INFORMATION.

REV CW030817