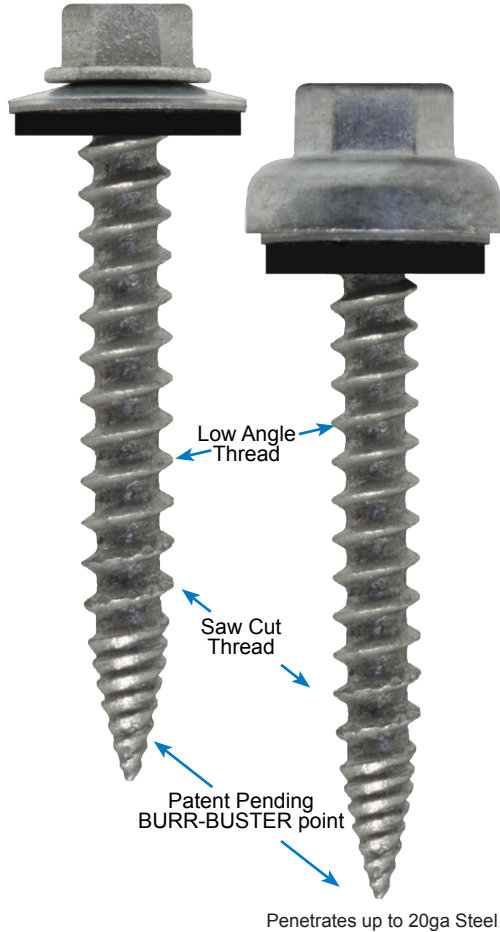


PANEL-TITE® BURR-BUSTER

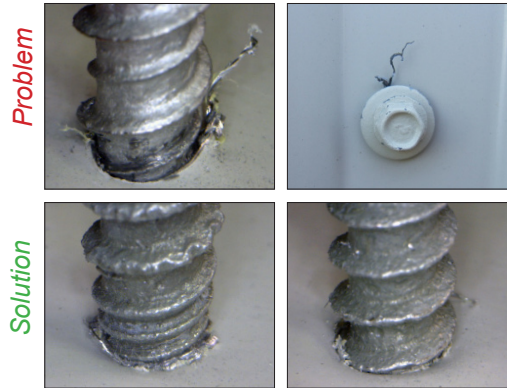
METAL-TO-WOOD SELF-PIERCING SCREWS

**Reduce burrs and
increase back-out resistance!**

Our PANEL-TITE® with the patent pending BURR-BUSTER® point is engineered to reduce burrs and provide more resistance to back-out!



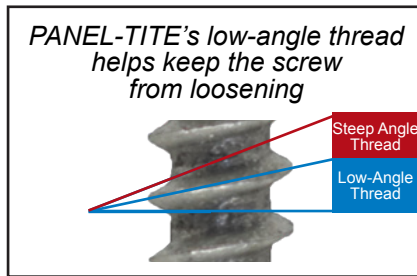
REDUCE BURRS



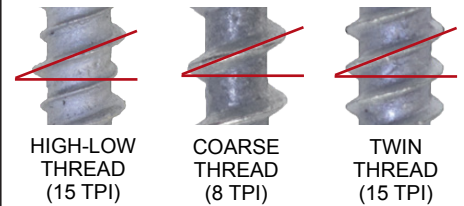
Ordinary self-piercing screws produce burrs during installation that can damage the washer and corrode quickly!

The BURR-BUSTER® point is designed to extrude the metal as it penetrates, minimizing burrs.

RESIST BACK-OUT



Ordinary metal-to-wood screws have steep angled threads that are easily overdriven and can back-out.



SIZES

CARBON STEEL | TRI-SEAL® Coated

Hex Size: 1/4" HWH
Washer: .500" Dia. / 26ga G-90 to EPDM



ZINC HEAD | TRI-SEAL® Coated

Hex Size: 5/16" HWH
Washer: .565" Dia. / Aluminum to EPDM



1-1/2" long zinc head screws are available after January 2018. Other sizes in fall of 2018. Contact TFC for availability.

Application: Steel to Wood \ Pierces up to 20ga steel.

Size	Part #	Box Qty.
CARBON STEEL TRI-SEAL® COATED		
#10-12/24 x 1" Burr-Buster CS / TS	10100HWBBCSTSBW	2,500
#10-12/24 x 1-1/2" Burr-Buster CS / TS	10150HWBBCSTSBW	2,500
#10-12/24 x 2" Burr-Buster CS / TS	10200HWBBCSTSBW	2,000
#10-12/24 x 2-1/2" Burr-Buster CS / TS	10250HWBBCSTSBW	2,000
#10-12/24 x 3" Burr-Buster CS / TS	10300HWBBCSTSBW	1,500
ZINC HEAD TRI-SEAL® COATED		
#10-12/24 x 1-1/2" Burr-Buster ZH / TS	10150HWBBCSTSZH	2,500

All fasteners can be painted with our Kalida-Kote paint finish to your exact color match.

INSTALLATION: Install using a 2,500 RPM screw gun with torque control or depth sensing feature. Impact tools are not recommended.

PERFORMANCE SPECIFICATION

Fastener Dia. & Point	PULLOUT / ULTIMATE IN POUNDS					
	1/2" Ply	5/8" Ply	3/4" Ply	7/16" OSB	19/32" OSB	2 x 4 SYP
#10-12 Burr Buster	349	450	706	258	381	648*

Test Report # T279-17 & T299-17 | Farabaugh Engineering.
NOTE: * 1" embedment into face of 2x. Deeper embedment will increase pullout.

DISCLAIMER: RESULTS AND SPECIFICATIONS ARE A RESULT OF LABORATORY TESTS. APPROPRIATE SAFETY FACTORS SHOULD BE USED. DETERMINING THE PROPER FASTENER IS THE RESPONSIBILITY OF THE USER OR SPECIFIER. SINCE APPLICATION CONDITIONS VARY AND ARE UNCONTROLLABLE BY TFC, WE ASSUME NO LIABILITY FOR THE USE OF THIS INFORMATION.

Washer Size	PULLOVER / ULTIMATE IN POUNDS				Size	Torsional (min. in-lbs)
	26ga (.019")	24ga (.023")	22ga (.031")	20ga (.035")		
.500" O.D.	515	674	875	1100	#10-12	65
.565" O.D.	587	744	915	993		

CORROSION TESTING	Results
SO ₂ Test Per ASTM G87	20 Cycles
Salt Spray Per ASTM B117	1,000 hrs

Can be used in treated lumber.