

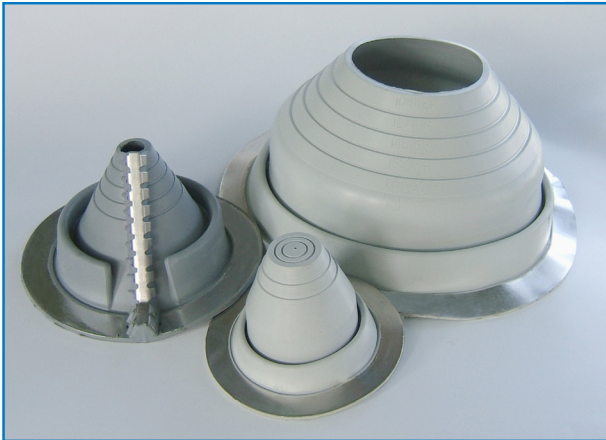
# PIPE MASTER

## METAL ROOFING PIPE FLASHING



# PIPE-MASTER PIPE FLASHING

## Standard Applications



- Flexible, weather resistant EPDM rubber or silicone.
- Aluminum base is flexible to conform to any panel profile
- Grey EPDM is ozone and ultraviolet resistant

Pipe Size Outside Diameter	Flash Number	Flashing Details	TFC Part Number	Number of Fasteners
1/4" - 2 1/2" EPDM	#1	Top Opening Diameter: Closed Overall Height: 2.77" Base Diameter: 4.75"	001DEKR	10
1 3/4" - 3" EPDM	#2	Top Opening Diameter: 1.44" Overall Height: 3.53" Base Diameter: 6.21"	002DEKR	13
1/4" - 5" EPDM *Silicone	#3	Top Opening Diameter: Closed Overall Height: 3.64" Base Diameter: 7.74"	003DEKR 003DEKS	16 16
3" - 6 1/4" EPDM	#4	Top Opening Diameter: 2.38" Overall Height: 5.05" Base Diameter: 9.26"	004DEKR	19
4 1/4" - 7 3/4" EPDM *Silicone	#5	Top Opening Diameter: 3.50" Overall Height: 4.43" Base Diameter: 10.75"	005DEKR 005DEKS	22 22
5" - 9" EPDM	#6	Top Opening Diameter: 4.25" Overall Height: 5.60" Base Diameter: 12.50"	006DEKR	26
6" - 11" EPDM	#7	Top Opening Diameter: 4.90" Overall Height: 5.84" Base Diameter: 14.60"	007DEKR	30
7" - 13" EPDM *Silicone	#8	Top Opening Diameter: 5.80" Overall Height: 7.53" Base Diameter: 16.5"	008DEKR 008DEKS	35 35
9" - 19" EPDM *Silicone	#9	Top Opening Diameter: 7.45" Overall Height: 8.09" Base Diameter: 25.25"	009DEKR 009DEKS	54 54
15" - 24" EPDM *Silicone	#10	Pipe Size: 15"-24" Diameter (Square Base only)	010DEKR 010DEKS	148

Note: #1 and #3 are closed top. When flashing a steep pitch roof greater than 20° or a profile with a rib height of 1-1/2" or more, use the next larger flashing for increased flexibility.

### Fastening Recommendation



Corrosion resistant fasteners should be used around the base one every 1-1/2 inches as per the United Plumbing Code (UPC) recommendations. Refer to size chart for the quantity to use.

### Fastener

1/4-14 x 1-1/8" DP1 BLAZER Stainless Cap Head with VRT Technology



### PIPE-MASTER™ RETRO

Use in retrofit applications  
Gray or Black EPDM and Silicone

PIPE SIZE	US PART NUM	FLASHING DETAILS
#1	3/4" - 2-3/4"	Black RF 101 BS
		Gray RF 101 GS
		Silicone RF 102 RD
#2	2" - 7-1/4"	Black RF 201 BS
		Gray RF 201 GS
		Silicone RF 202 RD
#3	3-1/4" - 10"	Black RF 301 BS
		Gray RF 301 GS
		Silicone RF 302 RD

### Sealant Recommendation

Ultra 1000® or APS 500 sealant should be used under the base to assure a proper seal. If you prefer, additional sealant can be applied around base after installation.



Available in 11 colors to match your roof!  
**Sizes**

#3 - Pipe diameter 1/4" to 4"

#5 - Pipe diameter 4 1/4" to 7 3/4"

Material: EPDM

## Material Specifications

	EPDM	Silicone
Advanced Ozone Resistance	70 hours @ 500 ppm	70 hours @ 500 ppm
High Temperature Resistance		
Intermittent	+135° C (275° F)	+260° C (+500° F)
Continuous	+100° C (212° F)	+225° C (+437° F)
Low Temperature Resistance	-55° C (65° F)	-74° C (-100° F)
Tensile Strength (min)	10 MPa (1450 psi)	5 MOPa (700 psi)
Compression Set (max)	25%	50%