

The following information is provided to help you specify and install tapping screws correctly. Care should be used when selecting and installing screws to assure optimal performance.

TERMINOLOGY

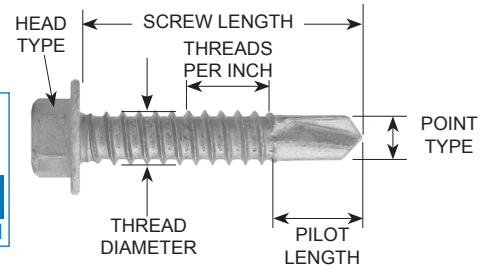
To eliminate confusion and assure the proper screw is used, specifications for tapping screws should be written to include;

1. Thread diameter
2. Threads per inch
3. Point type
4. Description of the type of screw
5. Drive size
6. Head Style
7. Material
8. Finish / plating

Example

1/4-14 x 1" DP3 BLAZER Drill Screw. 3/8" HWH.
Carbon Steel. TRI-SEAL™ 1,000 hour coating.

Thread Diameter	Threads Per Inch	Screw Length	Point Type	Head Size & Type
1/4	- 14	x 1"	DP3	3/8" HWH

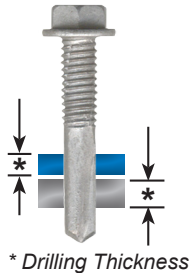


DETERMINE DRILL POINT TYPE

Drilling Thickness (Drill Point Type)

Add up the total thickness that will be drilled by the screw and select a drill point type that meets the required drilling thickness range. (Do not include pre-punched materials that will not be drill by the screw.)

Select the desired drill point type located on the size chart of the BLAZER® / CONCEALOR® sell sheet (i.e. BLAZER-5).



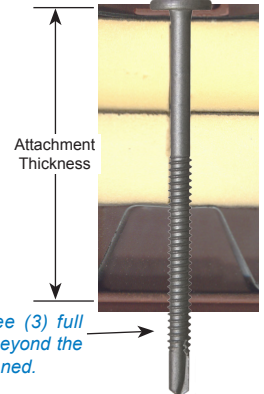
DETERMINE FASTENER LENGTH



Attachment Thickness | METAL

Measure from the top surface of the material being fastened to the underside of the metal. Be sure to allow for any void or insulation.

Select a screw length listed in the BLAZER® or CONCEALOR® sell sheet (attachment length).



Allow at least three (3) full threads to extend beyond the material being fastened.

INSTALLATION TECHNIQUES



Recommended Screw-Gun Speed

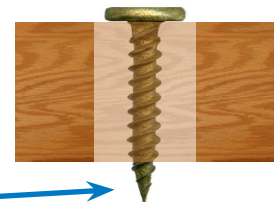
Using the proper tooling is important for producing consistent installation. It also minimizes potential screw or application failure caused by over-driven and under-driven fasteners.

Screw Size	Max RPM
#6, #8, #10	2,500
All wood screws	2,500
#12, 1/4", 5/16"	2,000
All DP5	2,000
304 Stainless Screws	1,200



Attachment Thickness | WOOD

Allow full penetration into wood decks so the screw point extends beyond the bottom side. Allow at least 1" screw embedment in 2 x structures to maintain designed pull out resistance. Greater penetration can achieve higher pull out values.



Allow screw tip to extend beyond decking.

WARNING! DO NOT USE IMPACT TOOLS FOR INSTALLATION!

Using impact tools to install pancake head screws can cause the head to separate from the body due to the high torque and impulse generate by the tool. HWH screws can also be easily overtighten which can lead to connection failure.

TFC is not responsible for failures caused by the use of improper tooling or improper installation.



Do

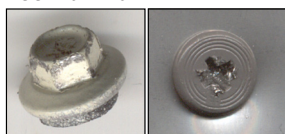
- Install fastener perpendicular to the work surface.
- Let the drill point do the work.
- Use a tool with torque control or depth sensing nose piece to prevent over-torqued and under-torqued screws.
- Allow all material to be drilled before tapping into the steel.

Do Not

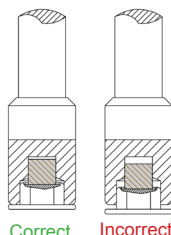
- Do not exert excessive pressure!
- Do not over drive the screw!
- **Do not use impact tools! (They can torque the screw to failure!)**

ACCESSORY TIPS

Look familiar?



Worn out drive bits and sockets produces poor drilling, can strip the recess, and damage painted fasteners.

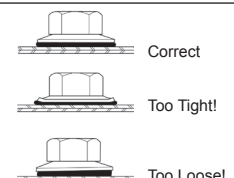


SET THE MAGNET!

Be sure screw head engages into the socket completely. This will eliminate screw wobble, improve the drilling performance, and reduce damage to painted screw heads.

SEALING WASHERS

To assure a proper seal, tighten the screw until the EPDM sealant extrudes just to the outer edge of the backing material. This also is a great way to visually inspect the screw to assure it is properly sealed.



Disclaimer: Hardware should always be installed by a competent professional with a good understanding of interior wall types and mounting fasteners. Please do not attempt to install any hardware unless you know how to safely operate the necessary tools, and have a good understanding of what you are doing. The following instructions are basic guidelines for qualified installers, and should be read through completely before starting your job.

© Triangle Fastener Corporation 2017