



LARGE DIAMETER TAPCON (LDT)



ADVANTAGES

SAVE TIME

EASILY INSTALLED

- Installs in less than half the time of wedge anchors or adhesive anchors
- Simply drill a pilot hole and drive the LDT anchor by hand or impact

EASILY REMOVED

- No torching or grinding required to remove anchors

SAVE MONEY

LOWER DRILL BIT COSTS

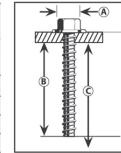
- Use standard ANSI bits instead of proprietary bits
- Single piece design, no nut and washer to assemble

USE STANDARD ANSI BITS

- No special proprietary bits to purchase or lose
- Reduce chances for anchor failure due to incorrect bit usage

Selection Chart

LDT Size	ANSI Standard Drill Bit Diameter	Anchor Head (Socket Size) Diameter	Washer Diameter	Minimum Embedment	Hole Depth	USE IN		
						Concrete	Hollow CMU	Grout-filled
LDT 3/8"	5/16"	9/16"	13/16"	1-1/2"	2-1/2"	YES	YES	YES
LDT 1/2"	7/16"	3/4"	1"	2-1/2"	3-1/2"	YES	NO	YES
LDT 5/8"	1/2"	13/16"	1-3/16"	2-3/4"	3-3/4"	YES	NO	YES
LDT 3/4"	5/8"	15/16"	1-5/16"	3-1/4"	4-1/4"	YES	NO	YES



© See catalog for effective lengths and length indication code.

APPROVALS/LISTINGS

LDT
(3/8" & 1/2") (5/8" & 3/4")
Sawtooth

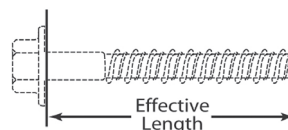
Miami-Dade County – #04-1025.08

Florida Building Code

SELECTION CHART								
LDT Carbon and Stainless Steel			Carbon Steel with Zinc Plating: Meets ASTM B695 & B633 specifications for zinc plating of 5um = .0002" thickness. This coating is well suited for non-corrosive interior environments. Carbon Steel with EnvireX Coating: Provides additional corrosion protection for outdoor applications.					
PART NUMBER	PART NUMBER FOR CARBON STEEL ENVIREX COATING	PART NUMBER FOR 410 STAINLESS STEEL	ANCHOR DIA. In. (mm)	DRILL BIT DIA. In. (mm)	EFFECTIVE LENGTH In. (mm) (See detail on left)	MAX. THICKNESS OF MATERIALS TO BE FASTENED In. (mm)	QTY/WT PER BOX lbs.	QTY/WT PER MASTER CARTON lbs.
LDT-3816	---	SLDT-3816	3/8 (9.5)	5/16 (7.9)	1-3/4 (44.5)	1/4 (6.4)	50 / 3.0	400 / 24.0
LDT-3824	---	SLDT-3824	3/8 (9.5)	5/16 (7.9)	2-1/2 (63.5)	1 (25.4)	50 / 4.5	400 / 34.0
LDT-3830	LDT-3830X	SLDT-3830	3/8 (9.5)	5/16 (7.9)	3 (76.2)	1-1/2 (38.1)	50 / 5.0	400 / 40.0
LDT-3840	LDT-3840X	SLDT-3840	3/8 (9.5)	5/16 (7.9)	4 (101.6)	2-1/2 (63.5)	50 / 6.5	400 / 52.0
LDT-3850	LDT-3850X	SLDT-3850	3/8 (9.5)	5/16 (7.9)	5 (127.0)	3-1/2 (89.0)	40 / 7.5	320 / 60.0
LDT-1230	LDT-1230X	SLDT-1230	1/2 (12.7)	7/16 (11.1)	3 (76.2)	1 (25.4)	25 / 4.5	150 / 27.0
LDT-1240	LDT-1240X	SLDT-1240	1/2 (12.7)	7/16 (11.1)	4 (101.6)	2 (50.8)	25 / 6.0	150 / 36.6
LDT-1250	LDT-1250X	SLDT-1250	1/2 (12.7)	7/16 (11.1)	5 (127.0)	3 (76.2)	25 / 7.6	150 / 45.6
LDT-1260	---	---	1/2 (12.7)	7/16 (11.1)	6 (152.4)	4 (101.6)	20 / 9.0	120 / 54.0
LDT-5830	---	---	5/8 (15.9)	1/2 (12.7)	3 (76.2)	1/4 (6.4)	10 / 3.5	100 / 35.0
LDT-5840	---	---	5/8 (15.9)	1/2 (12.7)	4 (101.6)	1-1/4 (31.8)	10 / 4.0	100 / 40.0
LDT-5850	---	---	5/8 (15.9)	1/2 (12.7)	5 (127.0)	2-1/4 (57.1)	10 / 4.7	100 / 47.0
LDT-5860	---	---	5/8 (15.9)	1/2 (12.7)	6 (152.4)	3-1/4 (82.6)	10 / 5.4	50 / 27.0
LDT-3444	---	---	3/4 (19.1)	5/8 (15.9)	4-1/2 (114.3)	1-1/4 (31.8)	10 / 7.4	50 / 37.0
LDT-3454	---	---	3/4 (19.1)	5/8 (15.9)	5-1/2 (139.7)	2-1/4 (57.1)	10 / 8.1	50 / 40.5
LDT-3462	---	---	3/4 (19.1)	5/8 (15.9)	6-1/4 (158.8)	3 (76.2)	10 / 9.1	30 / 27.3

* The stainless steel LDT's will be gold in color in order to differentiate them from the carbon steel anchors which are silver.

DESIGN GUIDE	
<i>For proper selection of anchor diameters based upon pre-drilled holes through base plates and fixtures to be fastened.</i>	
HOLE DIAMETER THROUGH FIXTURE In. (mm)	SUGGESTED LDT DIAMETER In. (mm)
7/16 (11.1)	3/8 (9.5)
1/2 (12.7)	3/8 (9.5)
9/16 (14.3)	1/2 (12.7)
5/8 (15.9)	1/2 (12.7)
3/4 (19.1)	5/8 (15.9)
7/8 (22.2)	3/4 (19.1)



LENGTH INDICATION CODE*	
CODE	LENGTH OF ANCHOR In. (mm)
A	1-1/2 < 2 (38.1 < 50.8)
B	2 < 2-1/2 (50.8 < 63.5)
C	2-1/2 < 3 (63.5 < 76.2)
D	3 < 3-1/2 (76.2 < 88.9)
E	3-1/2 < 4 (88.9 < 101.6)
F	4 < 4-1/2 (101.6 < 114.3)
G	4-1/2 < 5 (114.3 < 127.0)
H	5 < 5-1/2 (127.0 < 139.7)
I	5-1/2 < 6 (139.7 < 152.4)
J	6 < 6-1/2 (152.4 < 165.1)

* Located on top of anchor for easy inspection.